

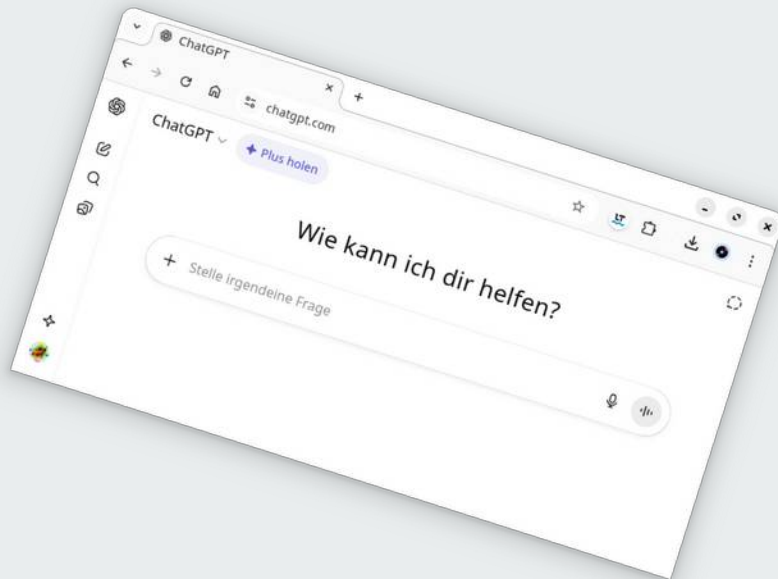


Public AI: an opening for civil society

DINAcon Bern 18.11.2025



1995



2025



Short history

- 1998 - Release of **Torch**, open-source machine learning framework
- 2007 - Start of **scikit-learn**, simplifying AI in Python
- 2010 - **Theano** revolutionises deep learning with automatic gradient calculation
- 2014 - **Caffe** accelerates convolutional neural networks
- 2015 - Google's **TensorFlow** democratises large-scale deep learning
- 2016 - **Keras** simplifies the use of deep learning frameworks
- 2017 - Facebook's **PyTorch** makes AI even more flexible and intuitive
- 2018 - Hugging Face **Transformers** for pre-trained language models
- 2021 - **Stable Diffusion** popularises open-source image generative AI
- 2023 - Meta's **Llama** accelerates the development of open-source LLMs
- 2024 - Mixture-of-Experts techniques lead to the launch of **DeepSeek**
- 2025 - Launch of **Apertus**, the first Frontier Model trained in Switzerland



Bonjour, Apertus!

Democratising **free** and **fair** AI models for global language environments

Climate-consciously trained **8B and 70B models** with open data and weights

Multilingual in over **1500** cultural contexts, compliant with AI Act & revDSG



Wirklich offen.

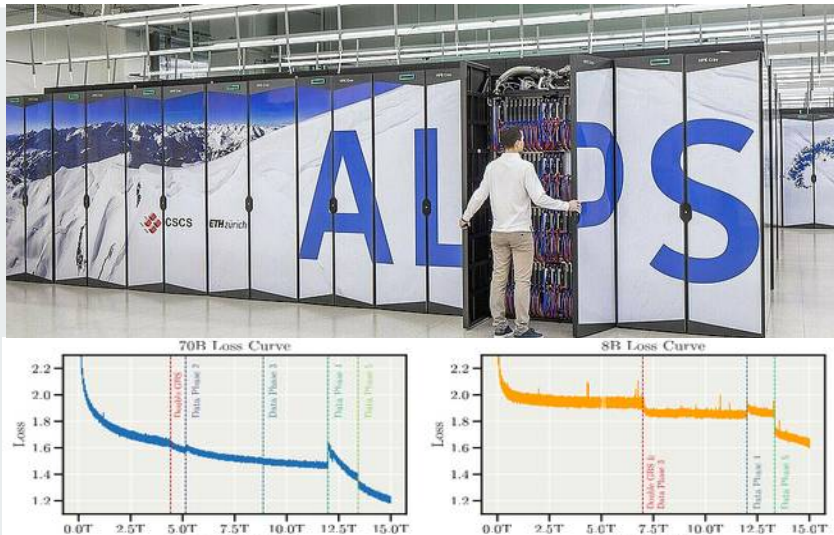
Apertus is available as a fully open model: **open source** (Apache 2.0), **open data** (FineWeb 2), **open weights** (Transformers), hosted on Hugging Face, maintained by the **Swiss AI Initiative**, led by EPFL, ETH and CSCS and the user community. Numerous remixes and quantizations already exist.





Data science. (Not rocket science)

An LLM is made with software that applies advanced statistics to huge volumes of data, with a neural network as the basis of a complex architecture. Apertus v0.1 was trained on **15 trillion tokens**, with 40% of the data being from **non-English** sources. This entire process is openly accessible, **documented** in a report, and reproducible on your local GPU farm or friendly supercomputer.





Les grandes questions

The challenges for individuals as well as Swiss labs and companies:

Where to **invest** resources?

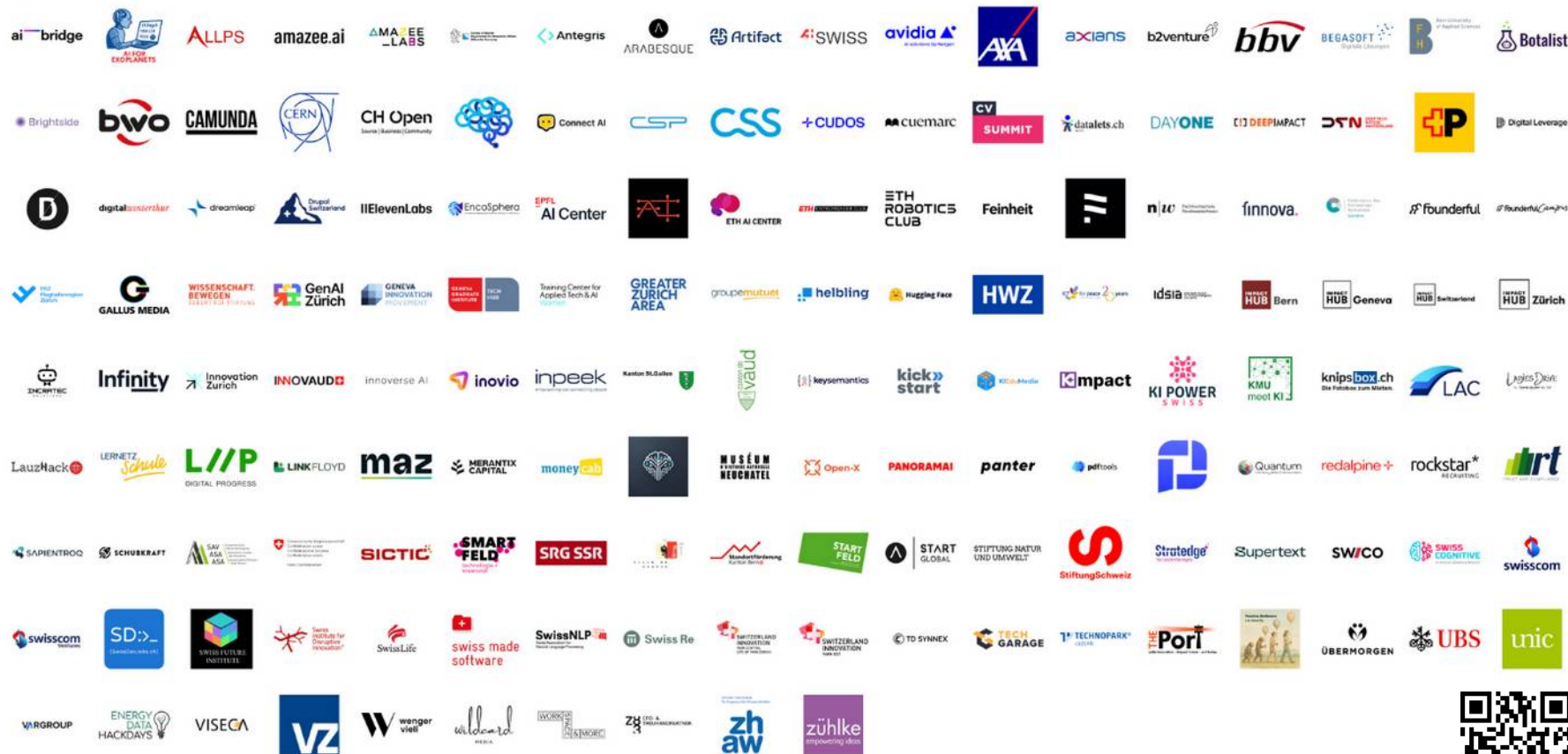
Is our IT **infrastructure** ready?

What is **legal** (data protection, compliance)?

How to start with "**Quick Wins**" and good use cases?



Swiss {ai} Weeks 2025 — Partners



Swiss {ai} Weeks

BERN

Train & Hackathon





Anleitung zum Setup





Language: English

About

This chatbot uses RAG (Retrieval-Augmented Generation) to answer questions in Tibetan based on the TibetanQA dataset.



Tibetan RAG Chatbot

AI-powered Tibetan Question Answering System

[illegible][illegible]

Dataset Info

Articles

~1,513

Q&A Pairs

~20,000

Answer language: ཅན་ཡིག་ (Tibetan) ▾

Type a question, e.g., 'How to write Tashi Delek?'

Send

Tenzin Choegyal, Sultan Aydın,
Kadir Akin, Emin
Göral & Cessa.





Use cases for. Civic Urbanism?

Demo Smart City Day Biel/Bienne

Karte



Diagramm

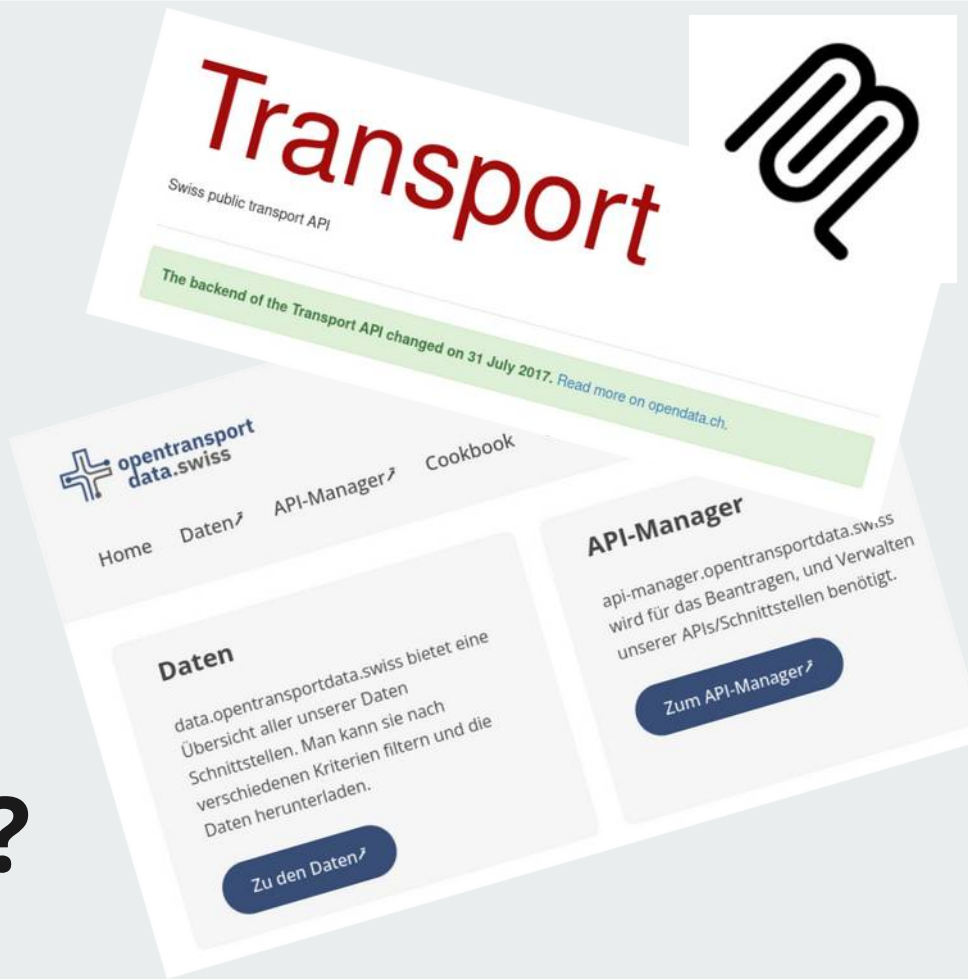


© OpenStreetMap contributors





API MCP service for. public transport?





Public AI+

Nachgedacht für 1 Sekunden ▾

Ergebnis von `public_ai_mcp_get_swiss_departures` anzeigen ▾

Nachgedacht für 1 Sekunden ▾

Here are the real-time departures from **Biel/Bienne** station:

Upcoming Departures (All on time)

TIME	PLATFORM	TRAIN	TO	OPERATOR
14:05	11	S37	Täuffelen	ASM-bti
14:16	3	IC5	Zürich HB	SBB
14:18	5	IC5	Lausanne	SBB
14:19	2	RE56	Delle	SBB
14:20	11	S37	Ins	ASM-bti
14:20	1	R41	Malleray-Bévilard	SBB
14:20	1	R41	La Chaux-de-Fonds	SBB
14:21	6	S20	Oltén	SBB
14:22	7	IR65	Bern	BLS-bls
14:24	9	S3	Belp	BLS-bls

Status: All departures are currently running on schedule with no delays.



Join us at the hackathon



Wo Themen / Fachgebiete Sprache

Nach Ort filtern ▼ Nach Themen/Skills filtern ▲ Nach Sprache filtern ▼ alle entfernen

☐ Alle Interessierten (4)
☐ Business (4)
☐ Daten (5)
☐ Design (3)
☐ Professionelle Skills (3)

alle entfernen





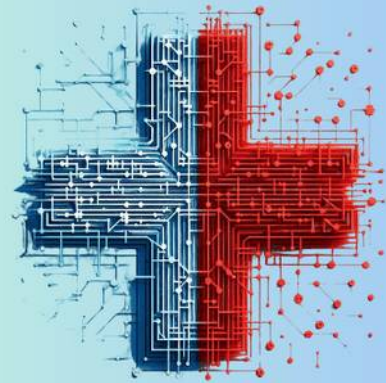
Join us at the **HACKnight!**

Inference
Utility

Hack the
HACKnight

November 18, 2025
HACKnight
DINAcon 2025
Hackathon für digitale Nachhaltigkeit
6 →

00 05:25:36



A P E R T V S

- + sovereign
- + sustainable
- + trustworthy

LET'S GO!





Hugging Face

🔍 Search models, datasets, users...



Swiss Inference Utility

Non-Profit

Upgrade to **T** Team or **E** Enterprise



We are creating a **non-profit association** as the governing body in the future responsible for maintenance of the inference endpoint developed by Public AI, working with the Swiss AI Initiative and wider community to and promote and support socially impactful use cases. *Join us on Hugging Face / at the HACKnight!*

Merci! Danke! Grazie!

oleg@datalets.ch

[Github.com/loleg](https://github.com/loleg)

[HuggingFace.com/loleg](https://huggingface.com/loleg)

This presentation is licensed CC BY 4.0